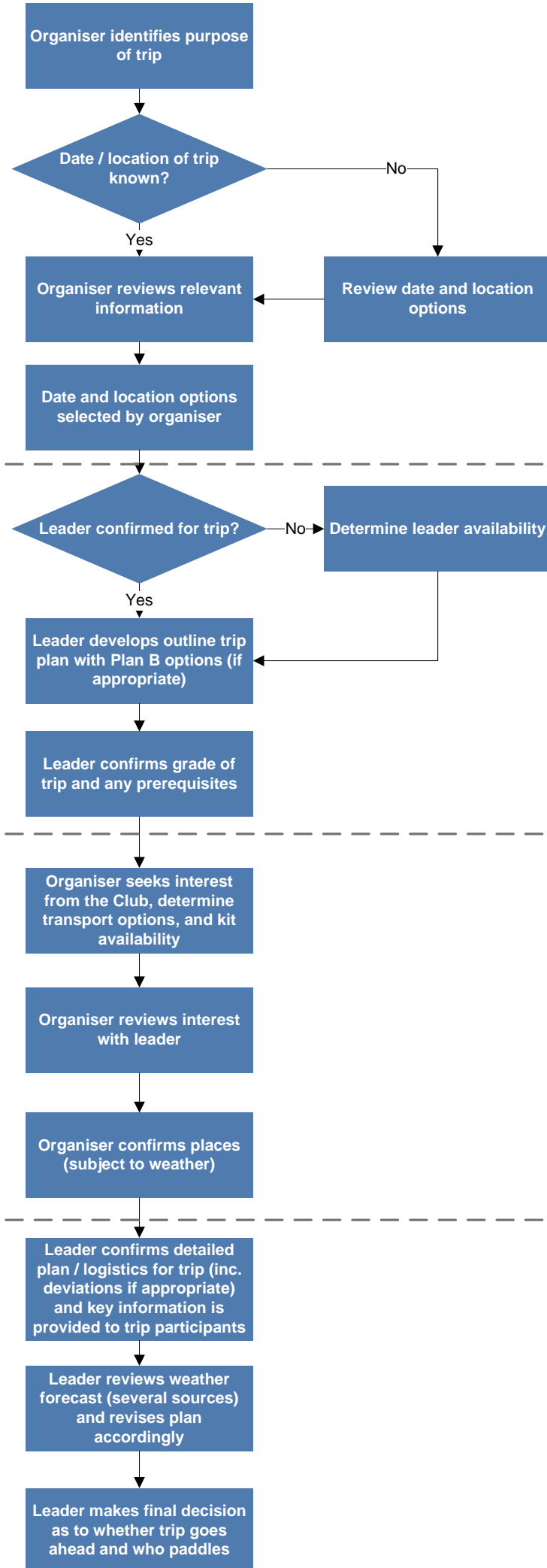


# CKC Sea Trip Organisation Checklist / Process

## Process

## Supporting Notes



What is the purpose of the trip, is it, e.g.:

- Open to all
- Restricted to certain abilities
- Journey, skills or both
- Day or multi-day

- Sometimes a date might be preferred but location is not known or *vice versa*

- Review all available information – tidal information, pilots, guidebooks, OS maps, local knowledge, weather prerequisites, etc
- **Note:** several members have guidebooks, OS maps, pilots, tidal atlases, etc for several areas of the UK
- **Note:** determine HW/LW at location of paddle in addition to relevant tidal constants

- **Note:** Leader should be suitably qualified and experienced for the planned trip – seek further guidance from the CKC Committee

- Pull together key information from above (e.g. tidal information, local knowledge, etc) – look to see what Plan B options might be in the event of adverse weather
- **Note:** Organiser can have a go at developing the outline plan and compare with the leaders – **but** the leader must do their own plan, check and take responsibility for it

- See also CKC Trip and Session Guidelines
- **Note:** prerequisites include weather conditions, group size, safety cover, equipment, transport, etc

- Discuss and confirm trip needs with Kit Officer
- **Note:** some members of the Club have roof racks and / or tow bars
- **Note:** transport options may include use of the trailer, transport of boats on roof racks, or local hire of boats

- **Note:** all trips are subject to variability in weather – adverse weather may make the grade of paddle more advanced than intended which means some people may not be able to paddle on the day or the trip does not go ahead at all

- Key information includes times and locations to meet, boat / kit collection arrangements, transport and shuttle arrangements, etc and emergency arrangements – this is usually provided several weeks before trip
- **Note:** this can be done by the leader, the organiser, or both as long as it is clear as to who communicates what

- Check several sources of weather forecast a week before and in the lead up to the trip
- **Note:** sources include Met Office, XC Weather, Windfinder, Magic Seaweb (for surf / swell)